



**FIELDMANN**<sup>®</sup>  
Home & Garden Performance



FDU 200601-E

---

English .....	9
Čeština .....	21
Slovenčina .....	31
Magyarul .....	43
Polski .....	55
Русский .....	67
Nederlands .....	79
Italiano .....	91
Hrvatski .....	103
Français .....	113
Español .....	125
Deutsch .....	137

1

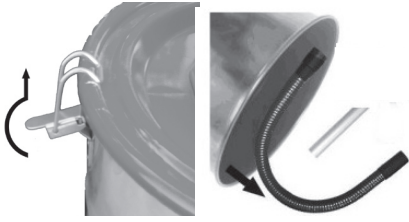


10



16

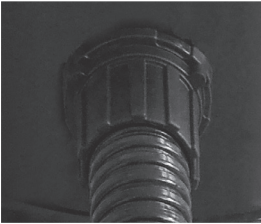
2



A

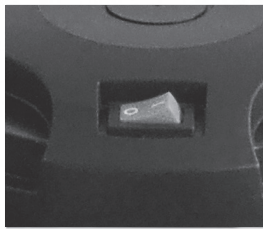


B

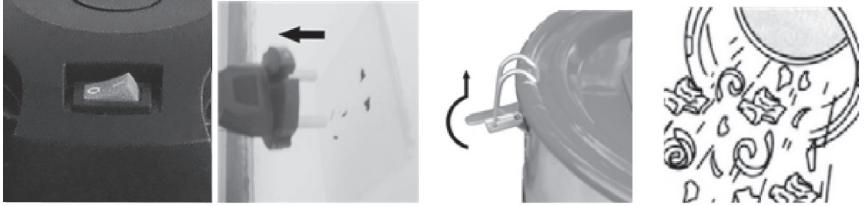


C

3



4



5

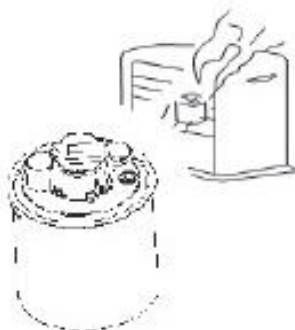


A

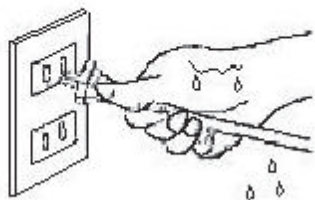
B

6

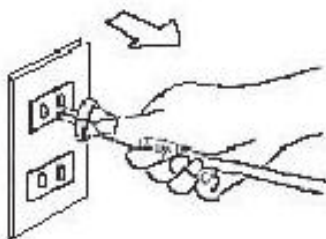
A



B



C









# Ash Vacuum Cleaner

## OPERATING INSTRUCTIONS

**Thank you for buying this ash vacuum cleaner. Before using it, please read carefully this operating manual and retain it for further use.**

## CONTENTS

FIGURES .....	3
1. GENERAL SAFETY REGULATIONS .....	10
2. EXPLANATION OF INSTRUCTION LABELS ON THE MACHINE .....	15
3. MACHINE DESCRIPTION AND SCOPE OF DELIVERY .....	16
4. IMPORTANT SAFETY INSTRUCTIONS .....	17
5. SAFETY MEASURES .....	18
6. VACUUM CLEANER ASSEMBLY .....	18
7. OPERATING INSTRUCTIONS! .....	19
8. MAINTENANCE AFTER USE .....	19
9. FILTER CLEANING .....	19
10. TECHNICAL DATA .....	20
11. DISPOSAL .....	21
12. DECLARATION OF CONFORMITY .....	22

# 1. GENERAL SAFETY INSTRUCTIONS

## Important safety warnings


- ✿ Unpack the product carefully and be sure not to throw away any part of the package before having found all components of the product.
- ✿ Keep the product in a dry place out of reach of children.
- ✿ Read all cautions and instructions. The failure to adhere to warning cautions and instructions may result in an accident, fire and/or a serious injury.

## Packaging

The product is placed in a package preventing damage during transport. This package is a raw material therefore it can be handed-over for recycling.

## Instructions for use

Before beginning to work with the machine, read the following safety rules and instructions for use. Familiarize with operating elements and the proper use of the device. Keep the manual in a safe place for future reference. We recommend keeping the original package including the inner packaging materials, cash voucher and guarantee card for a period of warranty at minimum. For a case of transportation, pack the machine into the original box from the manufacturer, thus ensuring a maximum protection of the product during a possible transport (e.g. moving or sending into a service station).

 **Note:** If you hand the machine over to next persons, hand it over together with the manual. Adherence to the attached instructions for use is a precondition for the proper use of the machine. The operation manual includes also instructions for operation, maintenance and repairs.

**The manufacturer does not take any responsibility for accidents or damages resulting from the failure to adhere to this manual.**

## Carefully read, remember and keep these safety instructions

**⚠ WARNING!** In the use of electric machines and power tools, it is necessary to respect and follow the following safety instructions for the reasons of protection against electric shock, personal injury and danger of fire. The term “power tool” in the instructions below refers both to mains-operated (corded) power tool or battery-operated (cordless) power tool. Save all warnings and instructions for future reference.

### Workplace

- ✿ Keep the work area clean and well lit. Cluttered or dark areas in the workplace invite accidents. Store power tools that you don't currently use.
- ✿ Do not operate power tools in environments with danger of occurrence of a fire or explosion, such as in the presence of flammable liquids, gases, or dust. Power tools create sparks which may ignite the dust or fumes.
- ✿ Keep unauthorised persons, especially children, away from the work area while operating a power tool! Distractions can cause you to lose control over the performed activity. In no event leave your power tool unattended. Keep the equipment away from animals.

### Electrical Safety

- ✿ Power tool plugs must match the mains socket outlet. Never modify the plug in any way. Do not use any adapter plugs with earthed (grounded) power tools. Undamaged plugs and matching outlets will reduce risk of electric shock. Damaged or fouled supply cables increase the risk of electric shock. If the power cord is damaged, it must be replaced by a new power cord which is available at the authorised service centre or the importer.
- ✿ Avoid body contact with earthed or grounded surfaces such as pipes, radiators, cooking ranges and refrigerators. There is an increased risk of electric shock if your body is earthed or grounded.
- ✿ Do not expose power tools to rain or wet conditions. Never touch the power tool with wet hands. Never wash the power tool under running water or immerse it in water.
- ✿ Never use the supply cable for other than intended purposes. Never use the cord for carrying or pulling the power tool. Never unplug the plug from the outlet by pulling the cable. Keep electric cables away from sharp or hot objects to prevent mechanical damage.
- ✿ The power tool was designed to be powered solely by alternating electric current. Always check if the electric voltage matches the information specified in the type label of the power tool.
- ✿ Never use power tool with damaged electric cable or plug or which has been dropped or is in any way damaged.

- ✿ If an extension cord is used, always check whether its technical parameters match the information specified in the type label of the power tool. When operating a power tool outdoors, use an extension cord suitable for outdoor use. If extension drums are used, these must be rolled out to prevent overheating of the cord.
- ✿ If a power tool is operated in a damp location or outdoors, its operation is only permitted if connected to an electric circuit protected by a residual current device <30 mA. Use of residual current device (RCD) reduces the risk of electric shock.
- ✿ Hold the power tool by insulated gripping surfaces only as the cutting or drilling tool may contact hidden wiring or its own power cord during operation.

## Personal Safety

- ✿ Be careful, stay alert and watch what you are doing when operating a power tool. Concentrate on your work. Do not use a power tool while you are tired or under the influence of drugs, alcohol or medication. A moment of inattention while operating power tools may result in serious personal injury. Do not eat, drink and smoke while operating a power tool.
- ✿ Use personal protective equipment. Always wear eye protection. Use protective equipment corresponding to the type of work you are doing. Protective equipment such as dust mask, non-skid safety shoes, hard hat, or hearing protection used in accordance with the working conditions will reduce the risk of personal injury.
- ✿ Prevent unintentional starting. Do not carry the power tool while it is energised or with your finger on the switch or trigger. Ensure the switch or trigger is in the "off" position before connecting to power source. Carrying power tools with your finger on the switch or energising power tools that have the switch on may result in serious injuries.
- ✿ Remove any adjusting key or wrench before turning the power tool on. An adjusting wrench or a key left attached to a rotating part of the power tool may result in personal injury.
- ✿ Keep proper footing and balance at all times. Do not overreach. Never overestimate your own capabilities. Never use power tools while you are tired.
- ✿ Dress properly. Wear work clothes. Do not wear loose clothing or jewellery. Keep your hair, clothing, gloves and other part of your body away from moving or hot parts of the power tool.
- ✿ Connect the equipment to dust exhaustion. If the tools are provided for the connection of dust collection or exhaustion devices, ensure these are properly connected and used. Use of such devices can reduce dust-related hazards.
- ✿ Fix the work-piece tightly. Use a cabinet clamp or a cramp to fix the work-piece you are about to machine.
- ✿ Never use power tools if you are under the influence of alcohol, drugs, medication or other narcotic or addictive substances.
- ✿ This equipment is not intended for use by persons (including children) with limited physical, sensual or mental capacities or lack of experience or knowledge unless they are supervised or instructed about the use of the equipment by a person responsible for their safety. Children must be supervised to make sure they are not playing with the equipment.

## Power Tool Use and Maintenance

- ✿ Always disconnect the power tool from the mains in case of any problem during the work, before cleaning the power tool or its maintenance, during each transportation and after the completion of the work! Never operate a power tool if it is damaged in any way.
- ✿ Immediately stop working if the power tool generates abnormal noise or smell.
- ✿ Do not overload the power tool. The power tool will operate better and safer if it is used at the rate for which it was designed. Use correct power tool which is intended for the given activity. The correct power tool will do the job it was designed for better and safer.
- ✿ Do not use the power tool if it cannot be safely turned on and off using the control switch. Use of such power tool is dangerous. Defective switches must be repaired by a certified service provider.
- ✿ Disconnect the tool from the power source before making any adjustments, changing accessories or maintenance. Such preventive safety measure prevents the risk of starting the power tool accidentally.
- ✿ Store idle power tools out of the reach of children and unauthorised persons. Power tools can be dangerous in the hands of untrained users. Store the power tools in a dry and safe place.
- ✿ Keep the power tool in good condition. Check the adjustment of moving parts and their mobility. Check for any damage to the protective guards or other parts which could affect safe operation of the power tool. If damaged, have the power tool properly repaired before further use. Many accidents are caused by poorly maintained power tools.
- ✿ Keep cutting tools sharp and clean. Properly maintained cutting tools with sharp cutting edges facilitate work, reduce the risk of injury and are easier to control. Use of accessories other than those specified in the instructions for use could result in damage to the power tool and cause injuries.
- ✿ Use the power tool, accessories and tool bits etc. in accordance with these instructions and in the manner intended for the particular type of power tool taking into account the working conditions and the work to be performed. Use of the power tool for purposes other than those the power tool was intended for could result in hazardous situations.

## Use of Cordless Power Tools

- ✿ Before inserting the battery, make sure the switch is in the "O-OFF" position. Inserting a battery into a switched-on power tool could result in hazardous situations.
- ✿ Charge batteries only using the chargers prescribed by the manufacturer. Using a charger intended for other battery type could result in its damage and occurrence of fire.
- ✿ Use only batteries intended for particular power tool. Use of different batteries could cause injury or occurrence of fire.
- ✿ If the battery is not used, keep it separately from metal objects such as clamps, keys, bolts and other small metal items which could cause connection of one battery contact with the other. Short-circuiting the battery could result in injury, burns or occurrence of fire.

- ✿ Handle the batteries with care. Rough handling could result in leak of chemical substance from the battery. Avoid contact with such substance and if, nonetheless, any contact occurs wash the affected area under running water. If eyes get into contact with the chemical substance seek immediately medical aid. Chemical substance from the battery can cause serious injuries.

## Service

- ✿ Do not replace parts of the power tool, do not make any repairs or interfere in any way with the construction of the power tool. Have your power tool repaired by qualified repair persons.
- ✿ Any repair or modification of the product without our company's authorisation is impermissible (it could cause injury or damage to the user).
- ✿ Always have your power tool repaired in a certified service centre. Use only original or recommended replacement parts. This will ensure that your safety and the safety of your power tool is maintained.

## 2. EXPLANATION OF INSTRUCTION LABELS ON THE MACHINE



This product is made in compliance with approved standards.



Before use of the machine please read carefully the operating instructions.



Do not vacuum-clean hot embers, burning items and the items with temperature exceeding 40 °C (104 °F).



# 3. MACHINE DESCRIPTION AND SCOPE OF DELIVERY

## **Machine Description** (see Fig. 1)

- 1 – Switch
- 2 – Handle
- 3 – Motor Top Cover
- 4 – Motor Body Cover
- 5 – Power Cord
- 6 – Collecting Container
- 7 – Clamps
- 10 – Filter
- 13 – Metal Hose
- 14 – Hose Connector
- 15 – Hose Handle
- 16 – Aluminum Tube

## **Scope of delivery**

Remove the machine carefully from the packaging and check whether the following parts are complete:

- ✿ Ash Vacuum Cleaner
- ✿ HEPA Filter
- ✿ Metal Hose
- ✿ Aluminum Tube
- ✿ Warranty Certificate
- ✿ User Manual

If any parts are missing or damaged, please contact the dealer from whom you purchased the machine.



## 4. IMPORTANT SAFETY INSTRUCTIONS

**⚠ WARNING!** In order to prevent the risk of fire, electric shock and injury please adhere to the following instructions:

- ✿ Never vacuum-clean burning or fuming items such as embers, cigarette butts or matches.



- ✿ Do not use vacuum-cleaner without installed filter.
- ✿ Never leave the appliance without surveillance when energized. Pull out the plug from mains socket when not using the appliance for longer period as well as before each activity related to its maintenance.
- ✿ Never use the appliance outdoors and on wet surface due to the risk of electric shock. This appliance is not a toy for kids. When the appliance is operated by a kid or is used near children, close supervision over the children must be secured.
- ✿ Do use the appliance exactly in line with the instructions that are contained in this instruction manual and use just the accessories recommended by the manufacturer.
- ✿ Do not use the appliance when its power cord or socket shows any signs of damage. Contact our customer service when you detect a function failure of your appliance after the appliance fell to the ground, got damaged, was left outdoors or got in touch with water.
- ✿ Do not pull the power cord nor use the cord as a strap when carrying the appliance. Make sure the door is not closed on the cord or the cord is not drawn over sharp edges and corners. Make also sure that the wheels do not pass at work over the appliance cord. Protect the cord against the contact with hot surfaces.
- ✿ When disconnecting the appliance from electric power supply do not pull out the plug from the socket by holding the cord, always hold the plug instead.
- ✿ When handling the appliance always keep your hands dry.
- ✿ Do not insert any foreign items into appliance holes and when the holes are clogged, do not switch the appliance on. Keep the holes dry and remove any dust, deposited remains, hairs and all other impurities that would have an adverse impact on air flow.
- ✿ Keep your hair, loose clothing, fingers and all other body parts out of reach of appliance moving elements.
- ✿ Switch off all appliance controls first and only then disconnect the plug from mains socket.
- ✿ Pay special attention to the vacuum-cleaning of stairs.

- ✿ Never vacuum-clean liquids, flammable or explosive substances such as gasoline, and do not use the vacuum cleaner near such substances.
- ✿ When you need to reel the cord, hold its plug firmly in your hand. During cord reeling do not leave its plug to flutter freely in the air.
- ✿ Before you put on the vacuum-clean hose, first pull out the plug from the mains socket.
- ✿ Never use the vacuum-cleaner without the installed dust bag and/or filter.
- ✿ A damaged supply cord of this appliance must be, for safety reasons, replaced by the service department of the manufacturer.
- ✿ This appliance is not designed for being operated by persons (including children of up to 8 years of age) with limited physical, sensory and mental abilities or by persons with insufficient experience and/or knowledge. The operation of this appliance by those persons is only possible assuming their safety is overseen by a competent person or this person instructs them how to operate this appliance. Children must be under supervision to make sure they do not play with the appliance.
- ✿ This vacuum cleaner is intended just for dry vacuum-cleaning.

## 5. SAFETY MEASURES (FIG. 6)

- ✿ Never vacuum-clean hot embers, burning items or items with a temperature exceeding 40 °C (104°F).
- ✿ Make sure your hands are dry and only then connect the plug into the mains socket.
- ✿ Never disconnect the appliance from the mains by pulling the power cord, always disconnect it by pulling the plug.

## 6. VACUUM CLEANER ASSEMBLY (FIG. 2)

Before assembly or disassembly of accessories, individual parts always first disconnect the plug from the mains socket.

- ✿ Prepare all accessory parts (Fig. 2/A).
- ✿ Put the tube on the hose handle (Fig. 2/B).
- ✿ Assemble the flexible hose according to the figure and insert its ending with a connector into the suction hole on the vacuum cleaner upper side. Push inwards and a click is heard at the right position (Fig. 2/C).

## 7. OPERATING INSTRUCTIONS

### Turning on/off

- ✿ The vacuum cleaner turns on using the ZAP/VYP switch (ON/OFF) (Fig. 3).

### After turning the vacuum cleaner off

- ✿ After vacuum cleaning is finished, turn off the appliance using the switch and pull the plug from mains socket. Remove the hose from the sucking hole; hose removal requires applying small force. Finally remove accumulated dust from the collecting container (Fig. 4).

## 8. MAINTENANCE AFTER USE

- ✿ Unscrew the filter securing bolt and remove the filter.
- ✿ Then clean or replace the filter.
- ✿ When disassembling the filter proceed in steps according to Figures 5/A, 5/B.
- ✿ When assembling the filter proceed in steps according to Figures 5/C.

## 9. FILTER CLEANING

- ✿ We recommend to clean filter at least once a month or when it is visibly fouled or vacuum cleaning force is reduced and motor noise is higher than usual.
- ✿ Never use vacuum cleaner without installed filter. Operating vacuum cleaner without installed filter leads to motor damage.
- ✿ Before filter cleaning always disconnect the vacuum cleaner from power supply.
- ✿ Filter cannot be cleaned in a dish washer.
- ✿ Do not use a hairdryer for filter drying.
- ✿ The best cleaning method is to shake out the filter.

## 10. TECHNICAL SPECIFICATIONS

<b>ASH VACUUM CLEANER:</b>	
Voltage / Frequency	230V/50Hz
Input Power	600W
Ash Vacuum-Cleaning	up to 40°C
Filter	HEPA filter
Metal Container	11L
Metal Hose	1m
Aluminium Hose	0.15m
Weight	2.4kg
Power Supply Cord	3m
Noise Level	80dB(A)

User Manual – Language version only.

# 11. DISPOSAL

## **INSTRUCTIONS AND INFORMATION ON DISPOSAL OF USED PACKAGING.**

Put any used package material to the place determined by the municipality for waste disposal.

## **DISPOSAL OF USED ELECTRIC AND ELECTRONIC EQUIPMENT**



This symbol on products or accompanying documents means that used electric or electronic products must not be put to ordinary municipal waste. Hand over such products to determined collection points for proper disposal, restoration and recycling. Alternatively, in some countries of the European Union or other European countries you can return your products to your local dealer when you buy an equivalent new product. By dutiful disposal of this product you can preserve precious natural resources and you help prevent any potential adverse effects on the environment and human health which could be the results of wrong waste disposal. Ask your local authority or the nearest collection point for additional details. In case of improper disposal of this waste kind penalties can be imposed in accordance with national regulations.

### **For companies in the European Union countries**

Should you want to dispose of electric and electronic devices, ask your dealer or vendor for necessary information.

### **Disposal in other countries outside the European Union**

Should you want to dispose of this product, ask your local authorities or your dealer for necessary information about disposal method.



This product fulfils all basic requirements of the EU directives that apply to it.

Text, design and technical specifications can change without prior notice and we reserve the right for their change.

# 12. DECLARATION OF CONFORMITY

**Product / Name:** FIREPLACE VACUUM CLEANER / FIELDMANN

**Type / Model:** FDU 200601-E ..... 230V/50Hz/600W

**The product complies with the following directives:**

- ✿ The Directive of the European Parliament and the Council No. 2014/35/EU on the harmonisation of the laws of Member States relating to electrical equipment designed for use within certain voltage limits.
- ✿ The Directive of the European Parliament and the Council No. 2014/30/EU on the harmonisation of the laws of the Member States relating to electromagnetic compatibility and repealing Directive No. 89/336/EEC.
- ✿ The Directive of the European Parliament and the Council No. 2006/42/EC dated 17 May 2006 on machinery, and amending Directive No. 95/16/EC.
- ✿ The Directive of the European Parliament and the Council No. 2002/95/EC dated 27 January 2003 on the restriction of the use of certain hazardous substances in electrical and electronic equipment.
- ✿ The Directive of the European Parliament and the Council No. 2005/88/EC dated 14 December 2005 amending Directive No. 2000/14/EC on the harmonisation of the laws of the Member States relating to the noise emission in the environment by equipment for use outdoors.

**and standards:**

- ✿ EN 55014-1:2006/+A1:2009/A2:2011
- ✿ EN 55014-2:2015
- ✿ EN 60335-1:2012+A11:2014+AC:2014
- ✿ EN 60335-2-2:2010+A11:2012+A1:2013
- ✿ EN 61000-3-2:2014
- ✿ EN 61000-3-3:2013
- ✿ EN 62233:2008

**CE Certification** ..... 16

FAST ČR, a.s. is authorised to act on behalf of the manufacturer.

**Manufacturer:**

FAST ČR, a.s.  
Černokostelecká 2111, 100 00 Praha 10, Czech Republic  
Tax ID:: CZ26726548

In Prague, 17. 7. 2016

Name: Zdeněk Pech  
Chairman of Board

**FAST** FAST ČR, a.s.   
 Černokostelecká 1621, 251 01 Říčany  
 IČO: 26726548 tel.: +420/ 323 204 111  
 DIČ: CZ26726548 fax: +420/ 323 204 110



Signature and stamps:







