

User Manual of Product 1:

Morphy Richards Vector Pour Over Coffee Machine 163002
Black Pour-Over Coffee Machine 12 Cup Black Coffee Machine

User Manual of Product 2:

Morphy Richards Vector 4 Slice Toaster 248131 Black Four
Slice Toaster Black Toaster

CM163002 MUK REV 1

morphyrichards®

smart ideas for your home



VECTOR

Pour Over Filter Coffee Maker



For competitions, product hints and tips and more join us at



www.morphyrichards.co.uk/blog



www.facebook.com/morphyrichardsuk



[@loveyourmorphy](https://twitter.com/loveyourmorphy)

www.morphyrichards.com

* Register online for your 2 year guarantee. See back of this instruction book for details. (UK and Ireland customers only)

Health And Safety

The use of any electrical appliance requires the following common sense safety rules.
Please read these instructions carefully before using the product.

- This appliance can be used by children aged from 8 years and above if they have been given supervision or instruction concerning use of the appliance in a safe way and if they understand the hazards involved. Cleaning and user maintenance shall not be made by children unless they are older than 8 and supervised. Keep the appliance and its cord out of reach of children aged less than 8 years. Children shall not play with the appliance.
- Appliances can be used by persons with reduced physical sensory or mental capabilities or lack of experience and knowledge if they have been given supervision or instruction concerning use of the appliance in a safe way and understand the hazards involved.
- This appliance is intended to be used in household and similar applications such as: farm houses, by clients in hotels, motels and other residential type environments, and bed and breakfast type environments. It is not suitable for use in staff kitchen areas in shops, offices and other working environments.
- If the mains cable is damaged, it must be replaced by the manufacturer, its service agent or similarly qualified person in order to avoid a hazard.

Location

- Always locate your appliance away from the edge of the worktop.
- Ensure that the appliance is used on a firm, flat surface.
- Do not use the appliance outdoors or near water.
- **WARNING: Do not place the appliance onto a metal tray or metal surface whilst in use.**

Mains cable

- Do not let the mains cable hang over the edge of the worktop where a child could reach it.
- Do not let the mains cable run across an open space e.g. between a low socket and a table.
- Do not let the mains cable run across a cooker or other hot area which might damage the cable.
- The mains cable should reach from the socket to the base unit without straining the connections.

Personal safety

- **WARNING: To protect against fire, electric shock and personal injury do not immerse cord, plug and appliance in water or any other liquid.**
- **WARNING: Misuse of appliance could cause personal injury.**
- Unplug from the outlet before cleaning.
- Allow to cool before putting on or taking off parts and before cleaning.
- Do not move the coffee maker while switched on.

Other safety considerations

- The use of attachments or tools not recommended or sold by Morphy Richards, may cause fire, electric shock or injury.
- Do not use the appliance for any use other than its intended purpose.
- **WARNING: Steam can scald.**
- Do not place the appliance on or near a hot gas or electric burner or in a heated oven.
- **WARNING: The appliance must not be immersed for cleaning.**
- **CAUTION:** To prevent damage to the appliance, do not use alkaline cleaning agents when cleaning. Use a soft cloth and detergent.

Electrical requirements

Should the fuse in the mains plug require changing, a 13 amp BS1362 fuse must be fitted.

WARNING: This appliance must be earthed.

Vector Pour Over Filter Coffee Maker

New to the world of coffee - ‘Pour Over’ filtering, for a superior taste.

Ordinarily a manual technique, the pour over method involves gradually filtering hot water through ground coffee in a very controlled manner.

‘Pour Over’ is becoming increasingly popular due to the flavour it produces; fuller, smoother and richer tasting coffee.

Morphy Richards has combined the superior taste of manual pour over coffee, with the ease and convenience of a programmable machine. As a result, it's perfect for those who really enjoy the true taste of coffee, but want it delivered quickly and conveniently.



The pour over filter machine includes two key differences to a standard filter product; a **‘cupcake’ filter** and a specially developed **brewing process**.

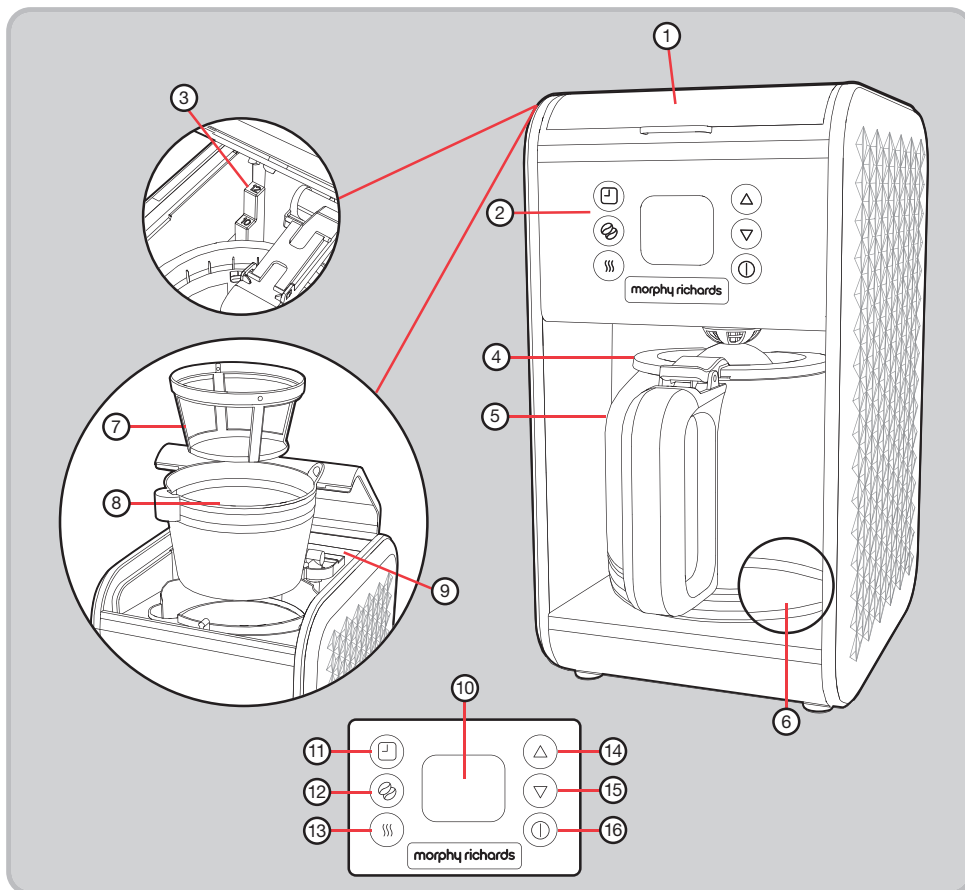
- The **cupcake filter** is so called because it is shaped like the bottom of a cupcake, rather than the more traditional cone. A traditional cone filter can over-extract the coffee in the narrowest part of the filter at the bottom, and this can result in a bitter taste. Whereas the cupcake filter allows a more even flow of water through the coffee grounds, and therefore delivers a smoother taste.
- The **brewing process** of our pour over machine has been developed to mirror the manual method traditionally used by baristas. At the start of the brewing process, it initially delivers only a small volume of water over the ground coffee held in the filter (a process known as **‘pre-soaking’**). The reason for this is that when ground coffee initially comes in to contact with hot water, it releases carbon dioxide for a short period (a process known as **‘blooming’**). If water is poured over the coffee during blooming, then little flavour is extracted resulting in a less flavoursome cup of coffee. This machine however waits for the blooming process to finish before brewing the coffee, resulting in a fuller flavour.

To learn more visit www.morphyrichards.co.uk/coffee

Quick Start Guide

Follow the instructions on page 5 to set up your new Vector Pour Over Filter Coffee Maker, and discover the baristas’ secrets!

Product Overview



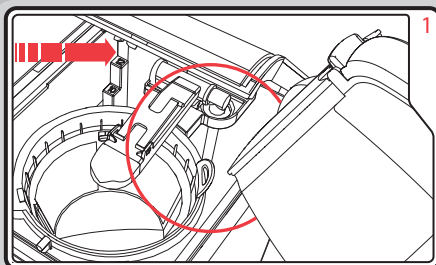
Features

- | | |
|---|-------------------------------|
| (1) Lid | (9) Water Reservoir |
| (2) Control Panel | (10) Display Screen |
| (3) Internal Water Gauge | (11) Program/Clock Button |
| (4) Carafe Lid | (12) Strength Selector Button |
| (5) Carafe (12 cup) | (13) Keep Warm/Clean Button |
| (6) Hot Plate | (14) Select Up Button |
| (7) Removable Permanent Filter (cupcake filter shape) | (15) Select Down Button |
| (8) Removable Filter Holder | (16) On/Off Button |

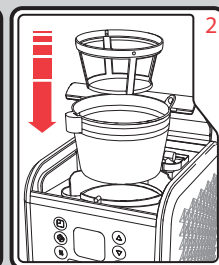
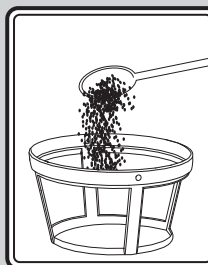
Before First Use

- Take your coffee maker out of the box and remove the packaging.
- Wash the detachable parts (removable permanent filter, removable filter holder, glass carafe) in warm soapy water.
- The first time you use your coffee maker, operate the coffee maker with water only.
- The lid (1) may be stiff to open for the first few uses. We recommend that you steady the side of the machine with one hand, and lift the lid with the other hand, for ease of opening.

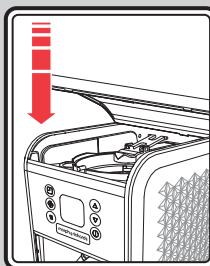
Using Your Coffee Maker - Quick Start



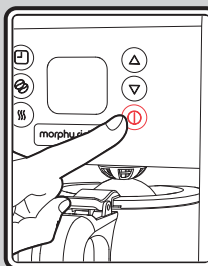
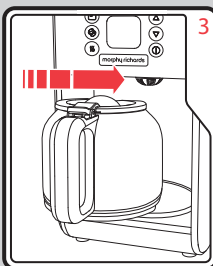
Fill the Water Reservoir (9) with cold water using the internal water ladder (3) for guidance. Fill water to the required amount of cups that you would like to produce. Do not exceed the maximum 12 cups level.



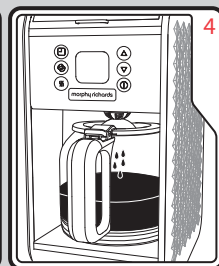
Spoon filter coffee into the Removable Permanent Filter (7). We recommend 7g (approx 1 scoop) of coffee per cup. Place the Filter into the Removable Filter Holder (8) ensuring the Removable Filter Holder aligns into place. The Removable Permanent Filter does not require an additional paper filter. However, you can use a paper filter too, if you choose, but ensure it is suitable for a cupcake shaped filter and matches the dimensions of the Removable Permanent Filter.



Close the Lid (1) and replace the Carafe (5) on the Hot Plate (6).



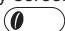

Press the On/Off Button (16) to start the brewing process. If you need to stop the brewing process, press the button a second time. **DO NOT OPEN THE LID (1) DURING THE BREWING CYCLE.**



Setting the Clock

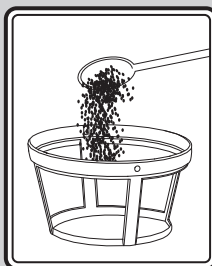
- 1 When your coffee maker is plugged in, the display will illuminate.
- 2 To set the time, press and hold the Program/Clock Button (11) for 3 seconds and use the Select Up & Down (14 & 15) Buttons to adjust the time. The display is a 12 hour clock.
- 3 Press the Program/Clock Button (11) again to confirm the time.

Using the Strength Selector

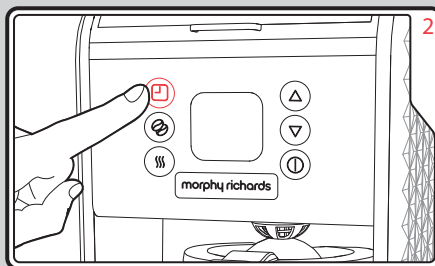
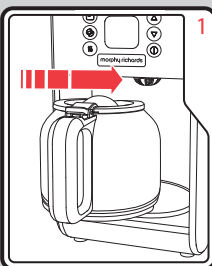
- You can adjust the brew strength for any volume of coffee (from 1 cup to a full 12 cup carafe). To do this, follow the steps below:
 - Press the Strength Selector Button (12) once, the display screen will flash STRENGTH and show  icon.
 - To choose between strengths, use the Select Up and Down (14 & 15) Buttons.
 - Press the Strength Selector Button (12) to confirm.
- However, if you are brewing 1-4 cups, the machine can automatically set the optimum program for you. This is specially adapted for small quantities. Follow the instructions below:
 - For brewing 1-4 cups of coffee, press and hold the Strength Selector Button (12) for 3 seconds. The screen will display . The machine will automatically adjust the cycle.

To Pre-set a Brewing Time

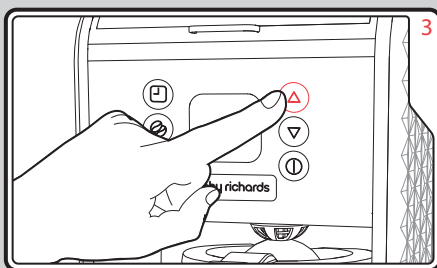
Ensure the clock is set before attempting to pre-set the brewing time. Follow the 'Setting the clock' instructions on page 5.



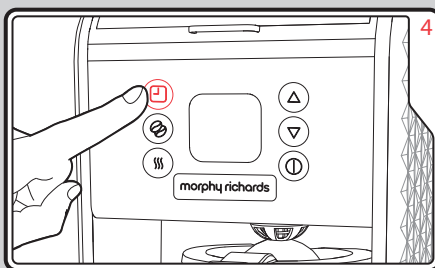
Follow 'Using your coffee maker - Quick Start' steps 1-3 on page 5.



Press the Program/Clock Button (11), the Screen will display 'PROGRAM'.



The default time will show 12am. Use the Up (14) and Down (15) buttons to change the time and press Program (11) to confirm.



After setting is complete, the machine will beep and display the selected time for 3 seconds before switching back to the current time. To cancel this program, press the Program/Clock Button (11) again so the 'PROGRAM' icon disappears.

Refilling Your Coffee Maker

- Switch off your coffee maker and allow 3 minutes to cool before refilling with cold water.

Keep Warm

- After the brewing cycle has finished, your coffee maker will automatically activate the keep warm function which will keep your coffee warm for 25 minutes.
- The display screen will show TIME SINCE BREW and will count up from 0:00.
- The machine will automatically go into standby mode after keep warm mode has finished.
- To reactivate the machine from standby mode, press any button.
- To switch the keep warm mode off before it has finished, press the On/Off Button **(16)**.
- To prevent the keep warm function from activating at all, press the Keep Warm/Clean Button **(13)** before you set the initial brew cycle, then press the Select Down Button **(15)** so that the timer displays 0:00.
- Press the Keep Warm/Clean Button again to confirm.

Cleaning Your Coffee Maker

- Unplug your coffee maker and allow to cool.
- Do not immerse your coffee maker in liquid.
- Rinse the Water Reservoir occasionally with cold water. Do not use a cloth as any residue or lint may be left behind to clog the coffee maker.
- Remove the Removable Permanent Filter, discard any used coffee and wash. Extended soaking helps to remove coffee stains from the mesh.
- Wash the Glass Carafe, Carafe Lid, and Removable Filter Holder in warm soapy water. Rinse and dry all parts thoroughly. Refit the Removable Permanent Filter and Removable Filter Holder.
- Wipe all external surfaces, including the Hot Plate, with a damp cloth and dry thoroughly.

- Care must be taken to ensure that the non-drip valve situated on the bottom of the removable filter holder is not damaged during cleaning.
- Never use harsh or abrasive cleaners.
- NO parts are suitable for cleaning in a dishwasher.

Auto Clean

- For a deeper clean follow these instructions.
- 1 Combine 6 cups of white vinegar and 4 cups of cold water in the reservoir.
 - 2 Press and hold the Keep Warm/Clean Button **(13)** until the screen indicates CLEAN, then press the On/Off Button **(16)**. Your coffee maker will beep and begin the cycle.
 - 3 Leave the machine for 45-60 minutes until the cycle is complete.
 - 4 Discard the dirty liquid in the Carafe **(5)** and run your coffee maker with cold water for a further 2 or 3 times before using again.

Descaling

- If you live in a hard water area, we recommend that your coffee maker is descaled at regular intervals, e.g. every 2-3 months. In areas of moderately hard water, you should descale every 6 months.
- If the water filters through more slowly than usual, it is a sign that descaling may be necessary.
- We recommend you use a proprietary liquid descaler which is especially made for coffee makers and plastic kettles. Follow the instructions on the bottle or sachet, and then operate the coffee maker with just water 3 times before making coffee.
- Do not use a kettle descaler unless the packet specifically states it is suitable for coffee makers.

Note: The removable permanent filter should not be used during descaling.

Contact Us

Helpline

If you are having a problem with your appliance, please call our Helpline, as we are more likely to be able to help than the store you purchased the item from.

Please have the product name, model number and serial number to hand when you call to help us deal with your enquiry quicker.

UK Helpline: **0344 871 0944**
 IRE Helpline: **1800 409 119**
 Spares: **0344 873 0710**

Talk To Us

If you have any questions or comments, or want some great tips or recipe ideas to help you get the most out of your products, join us online:

Blog: www.homeofthehouseproud.com
 Facebook: www.facebook.com/morphyrichardsuk
 Twitter: www.twitter.com/loveyourmorphy
 Website: www.morphyrichards.com

CM163002 MUK REV 1 08/17

Registering Your 2 Year Guarantee

Your standard one year guarantee is extended for an additional 12 months when you register the product within 28 days of purchase with Morphy Richards. If you do not register the product with Morphy Richards within 28 days, your product is guaranteed for 1 year. To validate your 2 year guarantee register with us online at

www.morphyrichards.co.uk

Or call our customer registration line or call our customer registration line quoting model and serial number, these numbers can be found on the base of the product.

UK 0344 871 0242
IRE 1800 409 119

N.B. Each qualifying product needs to be registered with Morphy Richards individually.

Please note that the 2 year guarantee is only available in the UK and Ireland. Please refer to the one year guarantee for more information.

Your 1 Year Guarantee

It is important to retain the retailer's receipt as proof of purchase. Staple your receipt to this back cover for future reference.

Please quote the following information if the product develops a fault. These numbers can be found on the base of the product.

Model no.

Serial no.

All Morphy Richards products are individually tested before leaving the factory. In the unlikely event of any appliance proving to be faulty within 28 days of purchase, it should be returned to the place of purchase for it to be replaced.

If the fault develops after 28 days and within 12 months of original purchase, you should contact the Helpline number quoting Model number and Serial number on the product, or write to Morphy Richards at the address shown.

You may be asked to return a copy of proof of purchase.

Subject to the exclusions set out below (see Exclusions), the faulty appliance will then be repaired or replaced as appropriate and dispatched usually within 7 working days of receipt.

If, for any reason, this item is replaced or repaired during the 1 year guarantee period, the guarantee on the new item will be calculated from original purchase date. Therefore it is vital to retain your original till receipt or invoice to indicate the date of initial purchase.

To qualify for the 1 year guarantee, the appliance must have been used according to the instructions supplied. For example, crumb trays should have been emptied regularly.

Exclusions

Morphy Richards shall not be liable to replace or repair the goods under the terms of the guarantee where:

- 1 The fault has been caused or is attributable to accidental use, misuse, negligent use or used contrary to the manufacturer's recommendations or where the fault has been caused by power surges or damage caused in transit.
 - 2 The appliance has been used on a voltage supply other than that stamped on the products.
 - 3 Repairs have been attempted by persons other than our service staff (or authorised dealer).
 - 4 The appliance has been used for hire purposes or non domestic use.
 - 5 The appliance is second hand.
 - 6 Morphy Richards reserves the right not to carry out any type of servicing under the guarantee at its discretion
 - 7 Plastic filters for all Morphy Richards kettles and coffee makers are not covered by the guarantee.
 - 8 Batteries and damage from leakage are not covered by the guarantee.
- This guarantee does not confer any rights other than those expressly set out above and does not cover any claims for consequential loss or damage. This guarantee is offered as an additional benefit and does not affect your statutory rights as a consumer. Morphy Richards products are intended for household use only. See usage limitations within the location safety instructions.

Disclaimer

Morphy Richards has a policy of continuous improvement in product quality and design. The company, therefore reserves the right to change the specification of its models at any time.



For electrical products sold within the European Community. At the end of the electrical products useful life, it should not be disposed of with household waste.

Please recycle where facilities exist. Check with your Local Authority or retailer for recycling advice in your country

**IF YOU ARE HAVING A PROBLEM
WITH ONE OF OUR PRODUCTS,
CALL OUR HELPLINE:**

UK: 0344 871 0944
EIRE: 1800 409 119
SPARES: 0344 873 0710

morphyrichards

The After Sales Division
Morphy Richards Ltd
Mexborough, South Yorkshire,
England, S64 8AJ

Helplines (office hours)
UK 0344 871 0944
Spare Parts 0344 873 0710
Republic of Ireland 1800 409 119
www.morphyrichards.com



Health and Safety

The use of any electrical appliance requires the following common sense safety rules. Please read these instructions carefully before using the product.

- This appliance can be used by children aged from 8 years and above and persons with reduced physical, sensory or mental capabilities, or lack of experience and knowledge, if they have been given supervision or instruction concerning the use of the appliance in a safe way and understand the hazards involved.
- Children shall not play with the appliance.
- Cleaning and user maintenance shall not be made by children unless they are older than 8 years and supervised.
- Keep the appliance and its cord out of reach of children less than 8 years.
- If the supply cable is damaged, it must be replaced by the manufacturer, its service agent or similarly qualified persons in order to avoid a hazard.
- The bread may burn, therefore do not use the appliance near or below combustible material such as curtains.
- This appliance is not intended to be operated by means of an external timer or separate remote control system.

The use of any electrical appliance requires the following common sense safety rules.

WARNING: Danger to the person!

IMPORTANT: Damage to the appliance!

In addition, we offer the following safety advice.

Location

- This appliance is intended to be used in household and similar applications such as:
farm houses;
by clients in hotels, motels and other residential type environments;
bed and breakfast type environments.
It is not suitable for use in staff kitchen areas in shops, offices and other working environments.

Mains cable

- Do not let the cable run across a cooker or hot area which might damage the cable.

Other safety considerations

- Only use for intended purpose.

Personal safety

- Do watch your appliance during use.
- **WARNING: Do not touch the top of the appliance or other hot parts during or after use, use handles or knobs.**
- **WARNING: Do not wrap the cable around the main body of the appliance during or after use.**
- **WARNING: Do not use under cupboards.**
- **WARNING: Do not insert oversize foods, metal, foil packages or utensils into the toaster.**
- **WARNING: Do not attempt to dislodge food when the appliance is plugged in and never insert cooking utensils into the slots.**
- **WARNING: Misuse of the appliance could cause personal injury.**
- **IMPORTANT: Do not place bread or other items on top of the slots as this may damage the appliance and creates a fire hazard.**

Precautions

- Never use the appliance when it is empty (when there is no bread inside) except on first use.
- Do not use very thin or broken slices of bread.
- Do not insert other foods that may drip during the cooking process. In addition to making the cleaning procedure more difficult, these may cause fires.
- Clean the crumb tray regularly: crumbs can smoke or burn.
- Do not insert (by force) foods that are too big for the slots.
- Do not insert forks or other utensils into the toaster in order to remove bread. As well as damaging the toaster, there is a high risk of electric shock.
- Should some toast remain blocked in the toaster, remove the plug from the mains, wait for the toaster to cool down until it is safe to touch, then turn the toaster over and shake it gently.

Electrical requirements

Should the fuse in the mains plug require changing, a 13 amp BS1362 fuse must be fitted.

WARNING: This appliance must be earthed.



CAUTION!
HOT SURFACE

**PLEASE BE AWARE
OF HOT SURFACES
HANDLE WITH CARE**
Treating scalds

- Run cold water over the affected area immediately.
- Do not stop to remove clothing.
- Seek medical advice quickly.

TT248131 MUK Rev 1 08/17

Registering your 1 year guarantee

your product is guaranteed for 1 year. To validate your 1 year guarantee register with us online at

www.morphyrichards.co.uk

Or call our customer registration line, quoting model and serial number, these numbers can be found on the base of the product

UK 0344 871 0242

IRE 1800 409 119

N.B. Each qualifying product needs to be registered with Morphy Richards individually.

Please note that the 2 year guarantee is only available in the UK and Ireland. Please refer to the one year guarantee for more information.

Your 1 year guarantee

It is important to retain the retailer's receipt as proof of purchase. Staple your receipt to this back cover for future reference.

Please quote the following information if the product develops a fault. These numbers can be found on the base of the product.

Model no.

Serial no.

All Morphy Richards products are individually tested before leaving the factory. In the unlikely event of any appliance proving to be faulty within 28 days of purchase, it should be returned to the place of purchase for it to be replaced.

If the fault develops after 28 days and within 12 months of original purchase, you should contact the Helpline number quoting Model number and Serial number on the product, or write to Morphy Richards at the address shown.

You may be asked to return a copy of proof of purchase. Subject to the exclusions set out below (see Exclusions), the faulty appliance will then be repaired or replaced as appropriate and dispatched usually within 7 working days of receipt.

If, for any reason, this item is replaced or repaired during the 1 year guarantee period, the guarantee on the new item will be calculated from original purchase date. Therefore it is vital to retain your original till receipt or invoice to indicate the date of initial purchase.

To qualify for the 1 year guarantee, the appliance must have been used according to the instructions supplied. For example, crumb trays should have been emptied regularly.

Exclusions

Morphy Richards shall not be liable to replace or repair the goods under the terms of the guarantee where:

- 1 The fault has been caused or is attributable to accidental use, misuse, negligent use or used contrary to the manufacturer's recommendations or where the fault has been caused by power surges or damage caused in transit.
 - 2 The appliance has been used on a voltage supply other than that stamped on the products.
 - 3 Repairs have been attempted by persons other than our service staff (or authorised dealer).
 - 4 The appliance has been used for hire purposes or non domestic use.
 - 5 The appliance is second hand.
 - 6 Morphy Richards reserves the right not to carry out any type of servicing under the guarantee at its discretion
 - 7 Plastic filters for all Morphy Richards kettles and coffee makers are not covered by the guarantee.
 - 8 Batteries and damage from leakage are not covered by the guarantee.
- This guarantee does not confer any rights other than those expressly set out above and does not cover any claims for consequential loss or damage. This guarantee is offered as an additional benefit and does not affect your statutory rights as a consumer. Morphy Richards products are intended for household use only. See usage limitations within the location safety instructions.

Disclaimer

Morphy Richards has a policy of continuous improvement in product quality and design. The company, therefore reserves the right to change the specification of its models at any time.



For electrical products sold within the European Community. At the end of the electrical products useful life, it should not be disposed of with household waste.

Please recycle where facilities exist. Check with your Local Authority or retailer for recycling advice in your country

**IF YOU ARE HAVING A PROBLEM
WITH ONE OF OUR PRODUCTS,
CALL OUR HELPLINE:**

**UK: 0344 871 0944
EIRE: 1800 409 119
SPARES: 0344 873 0710**

morphy richards

The After Sales Division
Morphy Richards Ltd
Mexborough, South Yorkshire,
England, S64 8AJ

Helplines (office hours)
UK 0344 871 0944
Spare Parts 0344 873 0710
Republic of Ireland 1800 409 119
www.morphyrichards.com




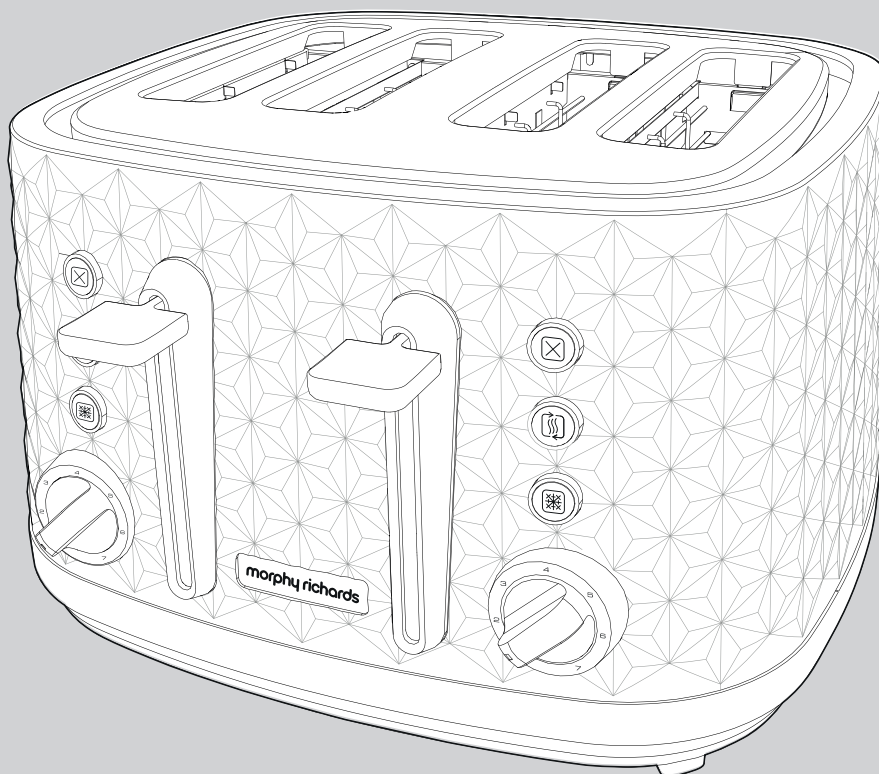
TT248131 MUK Rev 1

morphy richards®
smart ideas for your home



VECTOR 4 Slice Toaster

 Please read and keep these instructions for future use



For competitions, product hints and tips
and more join us at



www.morphyrichards.co.uk/blog



www.facebook.com/morphyrichardsuk

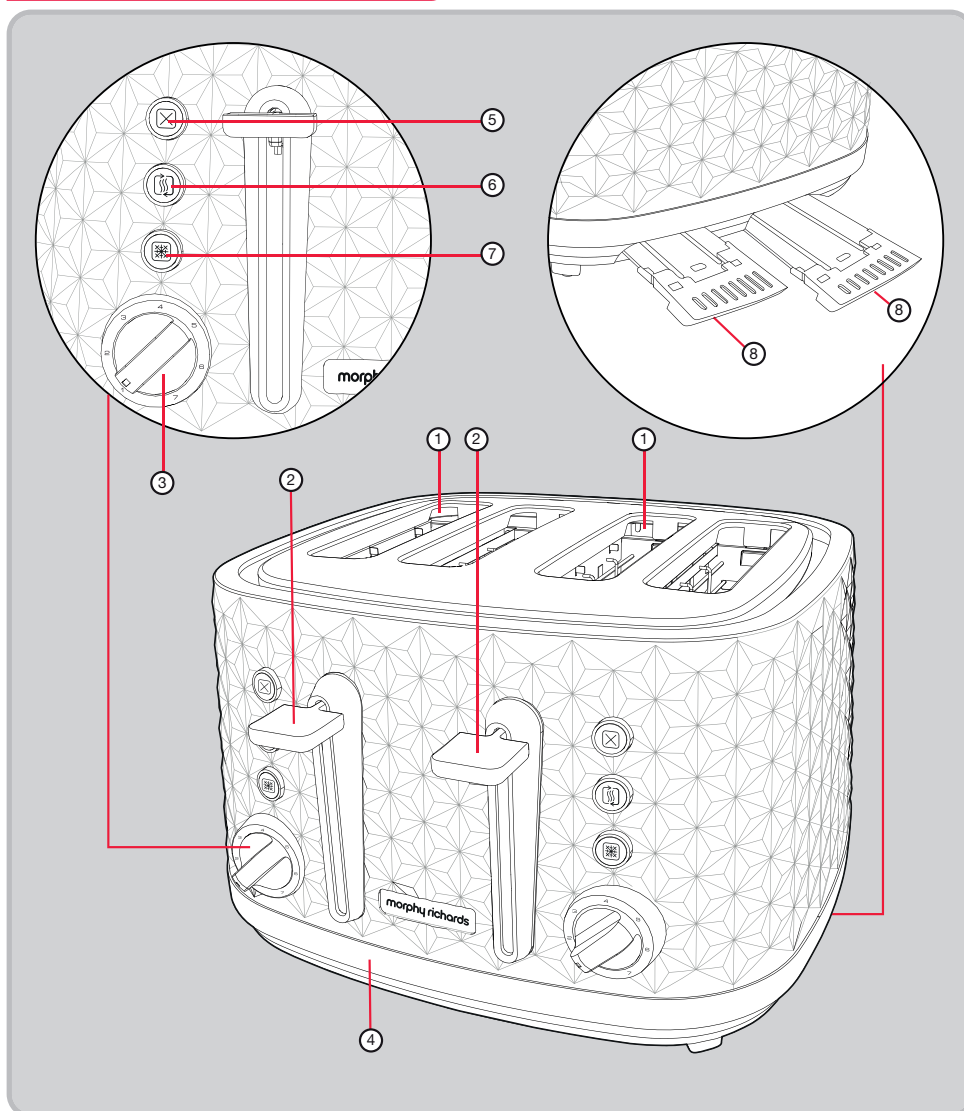


[@loveyourmorphy](https://twitter.com/loveyourmorphy)

www.morphyrichards.com

*Register online for your 1 year guarantee. See back of this instruction book for details (UK and Ireland customers only).

Product overview



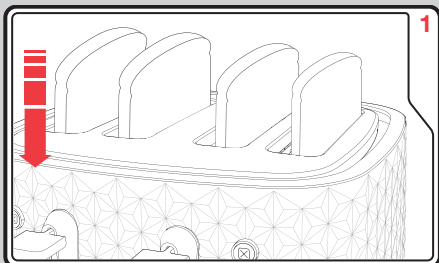
Features

- | | |
|-----------------------------------|-----------------------------|
| (1) Bread Slots | (5) Cancel Button |
| (2) Bread Carriage Levers | (6) Re-heat Button |
| (3) Browning Control | (7) Frozen Button |
| (4) Cable Storage
(underneath) | (8) Crumb Tray
(at rear) |

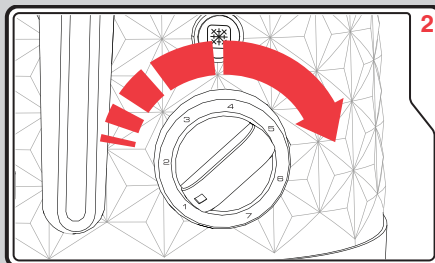
Before first use

- Before using your toaster for the first time, operate the toaster without bread.
- As with all new electric heating elements, your toaster will emit a 'new' smell when it is first switched on. This is quite normal and not a cause for concern.

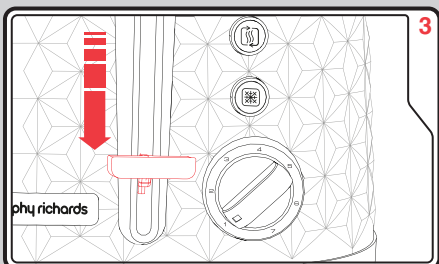
Using your toaster



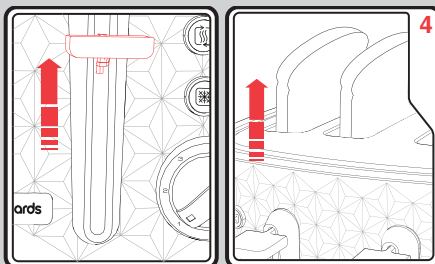
Place the sliced bread into the Bread Slots (1).



Adjust the Browning Control(s) (2) to the desired setting.



Lower the Bread Carriage Lever(s) (2).
The toaster will begin toasting the bread.



When completed, the Bread Carriage Lever(s) will automatically rise and lift the toast from the toaster.

Additional features

Cancel Button (5)

If you wish to stop the toasting process, press the Cancel Button (5).

Re-heat Button (6)

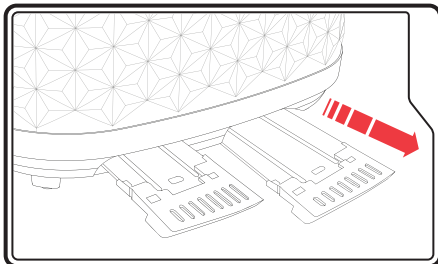
If your toast has popped up and gone cold, the toaster offers a re-heat facility. To use, lower the Bread Carriage Levers (2), and press the Re-heat Button (6) immediately. The button will illuminate and the toaster will operate for a short period reheating the bread.

Frozen Button (7)

To toast frozen bread, do not adjust the Browning Controls (3) from your normal setting. Place the frozen bread in the Bread Slots (1), lower the Bread Carriage Lever (2) and press the Frozen Button (7). The button will illuminate and the toaster will operate for a longer period defrosting and toasting the bread.

Removing the Crumb Tray

WARNING: Crumbs will accumulate in the Crumb Trays (8) and could catch fire if not emptied regularly.



1. When your toaster has cooled down completely, tap the sides of the case lightly to dislodge any crumbs lodged in the Bread Slots (1).
2. Pull the Crumb Trays and remove from the toaster.
3. Empty the Crumb Trays and replace back into the toaster.

Never operate your toaster without the Crumb Trays fitted.

Hints and tips

- In order to achieve uniform browning, we recommend you wait a minimum of 30 seconds between each toasting cycle, so that the control can be automatically reset.
- **If toasting one slice only, you may need to adjust the Browning Control (3) to a slightly lower setting. You will notice a variation in toast colour on one side of a single slice. The side facing the outside wall of the Bread Slot (1) will be darker in colour than the side facing the inner wall of the bread slot.**
- When toasting 2 slices it is recommended they are of equal size and freshness.
- Stale bread toasts more rapidly than fresh bread. Therefore, the Browning Controls should be set at a lower setting than usual.
- All sorts of bread can be used as well as teacakes, small rolls etc. Slices should not however be so thick as to cause burning or jamming within the Bread Slots (1).
- If the bread in your toaster becomes jammed disconnect your toaster at the socket, allow it to cool, then remove the bread.
- Allow your toaster to cool fully before putting away.

Care and cleaning

- Before cleaning, unplug your toaster and let it cool down.
- The external surfaces of your toaster can be cleaned with a soft cloth. Do not use abrasive detergents that can ruin the surface.
- **DO NOT IMMERSE IN WATER.**
- After each use, remove the plug from the electrical outlet and empty the crumb collection tray that is under the appliance.

DO NOT TOUCH ANY PART OF YOUR TOASTER WITH SHARP OR METAL UTENSILS, ESPECIALLY INSIDE THE BREAD SLOTS (1). RISK OF ELECTRIC SHOCK AND DAMAGE TO THE TOASTER.

Contact us

Helpline

If you are having a problem with your appliance, please call our Helpline, as we are more likely to be able to help than the store you purchased the item from.

Please have the product name, model number and serial number to hand when you call to help us deal with your enquiry quicker.

UK Helpline: 0344 871 0944

IRE Helpline: 1800 409 119

Spares: 0344 873 0710

Talk To Us

If you have any questions or comments, or want some great tips or recipe ideas to help you get the most out of your products, join us online:

Blog: www.morphyrichards.co.uk/blog

Facebook: www.facebook.com/morphyrichardsuk

Twitter: [@loveyourmorphy](https://twitter.com/loveyourmorphy)

Website: www.morphyrichards.com